



Hillrom™

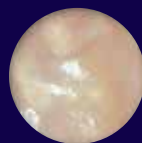
LET US CHANGE YOUR VIEW

WELCH ALLYN® MACROVIEW® PLUS OTOSCOPE

- Long-lasting LED illumination
- Digitally-capable to capture and share images
- Works with all Welch Allyn 3.5 V power sources
- Five-year warranty

Always Read the label and instructions for use

3X LARGER VIEWING AREA



Standard
Otoscope



Welch Allyn MacroView®
Plus Otoscope



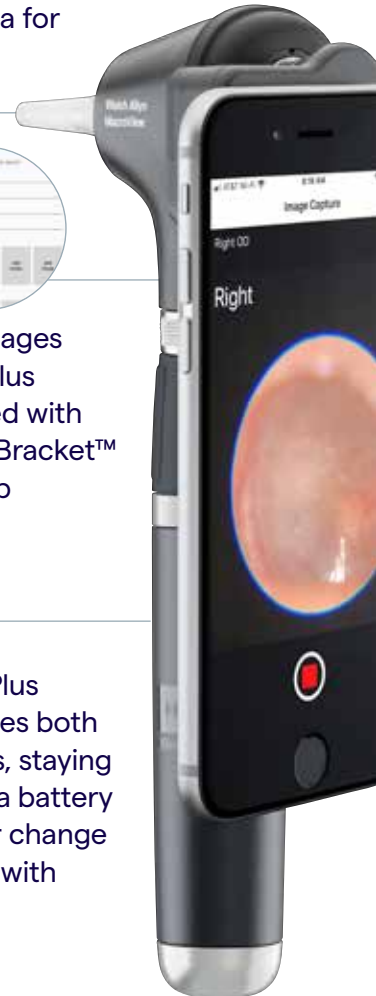
TAKE A CLOSER LOOK AT THE VALUE MACROVIEW PLUS ADDS

Pair the MacroView otoscope with Welch Allyn LumiView™ Clear Single-Use Ear Specula for brighter views



Save and share ear images with the MacroView Plus device when combined with our iExaminer® SmartBracket™ and iExaminer Pro App

The new Lithium Ion Plus Power Handle optimises both MacroView otoscopes, staying bright over the life of a battery charge with no colour change when dimmed, unlike with halogen lamps



Welch Allyn Otosopes

	 250-2	 238-2	 238-3
Model	Traditional	MacroView Basic	MacroView Plus
Warranty	1 year	3 years	5 years
Larger field of view	—	3X	3X
Designed with DuraShock	—	Yes	Yes
Digitally-capable	—	—	Yes

For more information, please contact your Hillrom representative or call Hillrom Customer Care on 1800 445 576.

Always read the labels and instructions for use. Contact your Hillrom Representative for the latest version.

AUTHORISED AUSTRALIAN SPONSOR Welch Allyn Australia Pty Limited Suite 4.01, 2-4 Lyonpark Road, Macquarie Park NSW Australia 2113

Hill-Rom reserves the right to make changes without notice in design, specifications and models. The only warranty Hill-Rom makes is the express written warranty extended on the sale of its products.

© 2021 Welch Allyn Australia Pty Ltd. APR256201-AU_R2 09-2021 ENG-AU

Distributed by:
AMA Medical Products
amamedicalproducts.com.au
sales@amamedicalproducts.com.au
1800 626 292

hillrom.com.au